



amazing
THAILAND

Surat Thani



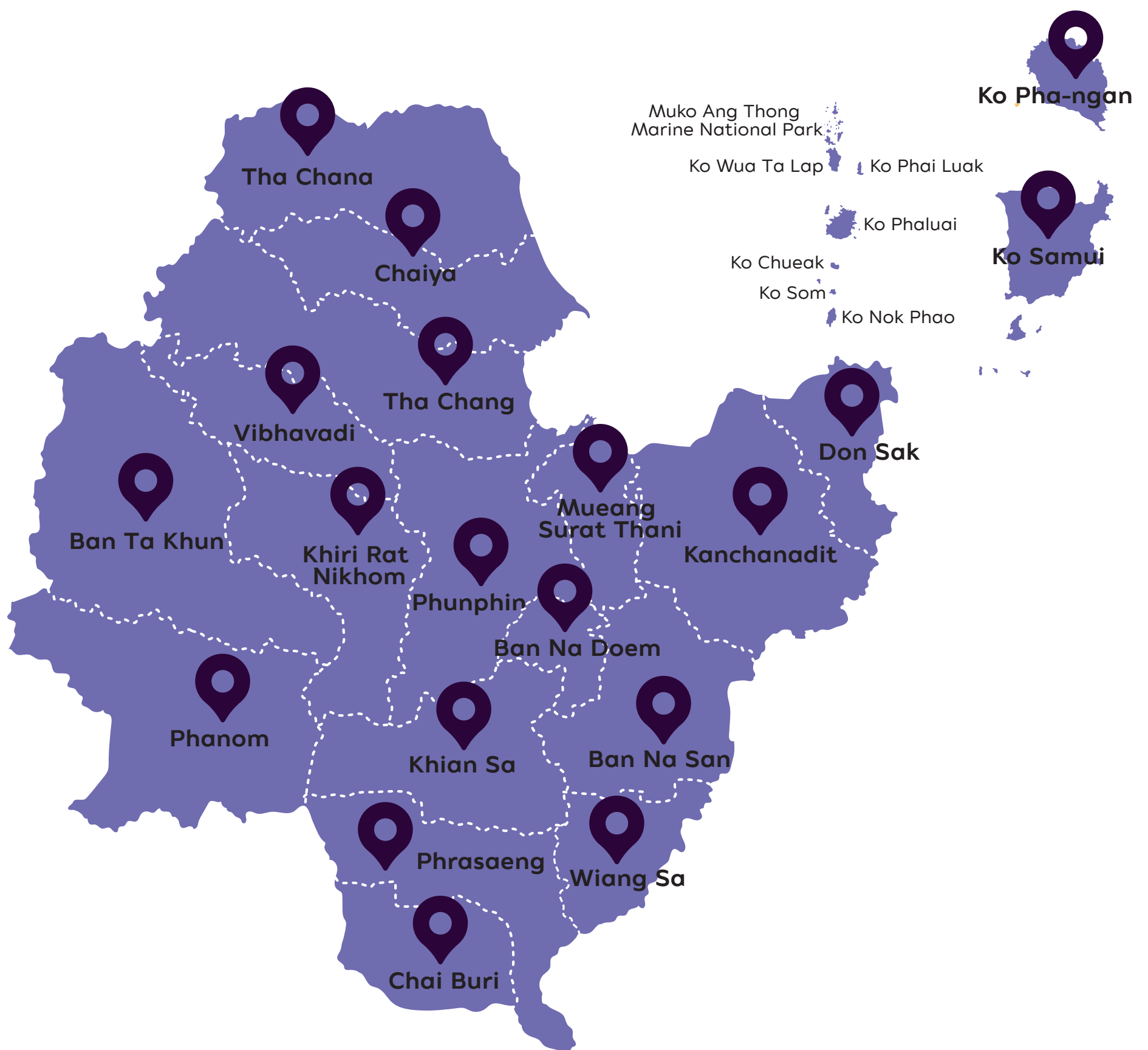
Surat Thani

**The land of 100 islands,
ripe rambutans, juicy oysters,
preserved eggs and above all, dharma**

The area around the Ban Don Bay was previously the heart of the Si Wichai empire and a place where civilization began to emerge, grow and prosper in the distant past. This coastal region features a host of long-standing communities like the Mueang Chaiya, Mueang Wiangsa, Mueang Khiri Rat Nikhom and Mueang Tha Tong settlements. In 1915, during his progressive and influential reign, King Rama V collected these smaller communities together under the moniker of Chaiya. Following this, His Majesty, while on a royal visit, was particularly impressed by the gentle nature, impressive manners and devotion to Buddhist principles of the locals that he instantly saw fit to change the name of these collected communities to Surat Thani.

The province has the largest area of the entire southern region, most of which is covered by dense forest, and is renowned for its diverse ecosystems, idyllic islands like Ko Samui, Ko Pha-ngan, Ko Tao and Nang Yuan, as well as its golden sands and clear waters.

Surat Thani Map





Ecotourism in Bang Bai Mai Subdistrict

Mueang Surat Thani, Surat Thani



Ecotourism in Bang Bai Mai Subdistrict

Mueang Surat Thani, Surat Thani



Located in Bang Bai Mai Subdistrict, or 'Nai Bang' as it is more commonly known by the locals, this verdant area is home to a natural network of hundreds of small canals which eventually meet the Tapi river. The small but long-standing community enjoys a simple, rural lifestyle in the shady glades beside the waterways and the locals have recently begun operating boat trips for visitors to enjoy the local flora and fauna, and float through the impressive tunnel of trees.

Visitors are also able to learn the local wisdom and see how natural products like orange juice and honey are made in the community. There's also a floating market here where local products are available for tourists to sample and purchase.



The market is open Sunday 09.00 - 16.00 hrs.

For further details contact, Tel. 08 1607 4935, 0 7729 2903



Phrathat Si Surat

Mueang Surat Thani, Surat Thani



Phrathat Si Surat

Mueang Surat Thani, Surat Thani



Located on Tha Phet mountain in the Makham Tia Subdistrict. This small mountain provides an ideal setting for learning about nature and wildlife, as it is home to a diverse range of wild animals. The area features a nature trail and serves as the location of Phrathat Si Surat, the first sanctuary in the Muang Surat Thani. The relics have an elegant and slender appearance, resembling candlesticks or asoke pillars, adorned with intricate stucco patterns that exemplify the beautiful and unique Srivijaya architecture.

On 27 March 1959, His Majesty King Bhumibol Adulyadej Maha Bhumibol Adulyadej the Great, along with Her Majesty Queen Sirikit and Her Royal Highness Princess Maha Chakri Sirindhorn, graced the province of Surat Thani with their visit. During their visit, His Majesty paid homage to Phrathat Si Surat, and both Their Majesties planted a sal tree for good fortune. Her Royal Highness Princess Maha Chakri Sirindhorn's Department conducted a ceremony to enshrine the Buddha's relics and planted Khiam trees, the official trees of Surat Thani province, as mementos.

Tha Phet Mountain holds immense historical and auspicious significance for the people of Surat Thani. Recognizing its importance, the people of Surat Thani organize an annual event called the “Traditional Parade of Phrathat Si Surat Blankets and Nature, Khao Tha Phet,” held on 26-27 March each year. This event serves as a demonstration of loyalty and honor to His Majesty the King, Rama IX, and emphasizes the profound value of sacred places within bountiful natural surroundings. The procession of the relics’ blankets symbolizes devotion to Buddhism, akin to offering cloth to the Lord Buddha.



For further details contact, Tel. 08 9872 9732 or 0 7727 2058



Ko Raet

Don Sak, Surat Thani



Ko Raet

Don Sak, Surat Thani

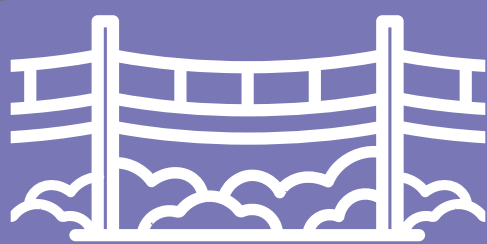


Located in Don Sak Subdistrict, just 700 metres from the coastline, the island takes its name from the 'Khi Raet' trees that line the island's beaches. Most of the islanders are of Hai-Lum Chinese descent and their families have called the island home for over two centuries. There's no mistaking the Chinese ancestry either when looking at the rows of wooden houses leading up the shrine.

The activities on offer here include a nature trail, boat trips and dolphin spotting in Don Sak Bay. There are several homestay accommodations on the island, all of which offer wonderfully fresh seafood.



The journey from Don Sak District involves crossing a bridge made of concrete to reach Raya Island. The distance is approximately 500 metres, connecting the village of Laemluan in Don Sak Subdistrict to Ko Raet.



Rope bridge, heart-shaped mountain and Ban Thepphithak community

Ban Ta Khun, Surat Thani



Rope bridge, heart-shaped mountain and Ban Thepphithak community

Ban Ta Khun, Surat Thani



lying behind Wat Khao Phang in Khao Phang Subdistrict, this wooden-tiled suspension bridge spans around 120 metres between large concrete pillars and offers stunning views over the Pa Saeng canal and across to the heart-shaped Thepphithak Peak. On the other side visitors can also find the famous Ban Khlong Saeng durian farm whose 100-year-old trees and unmistakably fragrant fruit are open for tourists to view and taste during durian season. There is also an OTOP market on weekends at the Ban Khao Thepphithak community.



For further details contact, Tel. 08 4843 7924



Rajjaprabha Dam (Chiao Lan Dam)

Ban Ta Khun, Surat Thani



Rajjaprabha Dam (Chiao Lan Dam)

Ban Ta Khun, Surat Thani



This clay and stone dam, located in Khao Phang Subdistrict. It is 95 metres high and 700 metres long with a 100-metre-high wall, and features over 100 small islands spread across its vast reservoir. The dam is the south's second multi-purpose dam and reservoir and doubles as a hydro-electric power station, as well as having agricultural and fishing purposes. Visitors can take a leisurely boat trip around the reservoir to enjoy some great views with the striking limestone peaks in the background and understand why the area is known as "Thailand's Guilin".

One of the most interesting points around the dam and reservoir is 'Khao Sam Kloe' peak. Affectionately known as the 'three friends' by locals, this trio of limestone peaks emerges from the reservoir in a distinctive fashion and is surrounded by incredible views of the surrounding greenery and emerald waters.

The Pakarang Cave is located in the 197 acres inlet and is maintained under the jurisdiction of the Forest Protection Unit, Khao Sok National Park.

The name translates as 'cave of corals' and is so named due to the stalagmites and stalactites formed from eroded limestone which resemble an underwater coral reef. There have also been numerous fossils unearthed in the area, which have been dated back to a period



There is plenty of accommodation around the dam and there are many boat trips and tours available, most of which depart from the Chiao Lan Thetsaban pier (Tel. 0 7791 8036, 08 3300 1730). If you have booked private raft accommodation, most of the resorts offer a free ferry service.

By Bus: There is a passenger van operated by Pantip (1970) Co., Ltd., Surat Thani-Ban Ta Khun-Khuean Cheow Lan route. The services are available 7.00 – 17.00 hrs. The terminal in downtown Surat Thani is located at Agricultural Market 2, Tel. 0 7728 7059 For the terminal at Cheow Lan Dam, Tel.08 6692 6241, 08 7264 1493





Khao Sok National Park

Phanom, Surat Thani



Khao Sok National Park

Phanom, Surat Thani



A lofty peak in the heart of the rainforest, Khao Sok sits at the center of the largest rainforest area in the entire southern region and covers a massive 738.74 square kilometres, including the area to the north of the Rajjaprabha Dam. The geographic features consist of earth and limestone peaks and surrounding forests and marshlands, which are the origin of the Tapi river. The ecosystem is also diverse, with numerous rare and endangered bird species including the hooded pitta and Malayan banded pitta and unusual plants like white backed palms, Maxburretia Furtado palms and rafflesia plants.

Rafflesias, also known as corpse plants, are parasitic plants that resemble lotus flowers in bloom, can grow to up to 70-80 cm. in diameter and take 9 months to grow to their full size, blooming for just 4-5 days. These rare blooms can only be found in two places, Khao Sok and Ayutthaya, in the central region and they can flower any time between November and April.



By Bus: Surat Thani - Khao Sok National Park provides bus terminal services in downtown Surat Thani at Agricultural Market 2, Tel. 0 7720 6217

Van terminal at the intersection of the entrance to the park, Tel. 08 9725 5517, serving 06.00-17.00 hrs.

Krabi-Phang Nga-Thung Maphrao-Tap Lamu-Khao Lak-Tak Nam Khem-Takua Pa-Khao Sok National Park Service.

The bus terminal in Krabi is at the Krabi Bus Terminal (Old Market), T-junction of the entrance national park, Tel. 0 7566 3444, 08 0280 2105

Entrance Fee: Adults 300 baht, Children 150 baht

There is accommodation and camping available as well as a convenience store located within the park.

For further details contact, Khao Sok National Park, Mu 6, Khlong Sok Subdistrict, Phanom District, Surat Thani 84250. Tel. 0 7739 5139 or www.dnp.go.th



Khlong Phanom National Park

Phanom, Surat Thani



Khlong Phanom National Park

Phanom, Surat Thani



This park covers an area of 410.4 square kilometres and features craggy limestone peaks, forests teeming with wildlife and vital marshlands which feed the Tapi river. There are also tourist attractions within the park, the Tham Kaeo and Tham Nam Lot Khao Wong caves, Ton Sai waterfall and distinctive Rafflesia flowers being the most prominent. These incredible looking blooms can be found in abundance in the mountains behind Nam Phueng village and they flower any time between November and April, particularly when the weather is moist and humid.

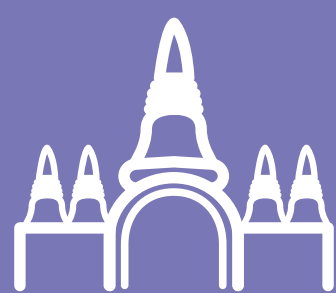


By Bus: There is a passenger van. Surat Thani - Khao Sok National Park which will run through the entrance to Klong Phanom National Park Bus station in Surat Thani city at the agricultural market 2, tel. 0 7720 6217, The van terminal at the third junction at the entrance to Khao Sok National Park, tel. 08 9725 5517, which can be called for a van that runs from Khao Sok National Park to pick up at the entrance to Klong Phanom National Park. The van is available 6.00-17.00 hrs.

Entrance fee: Adult 100 baht, Children 50 baht.

There is accommodation and camping available in the park

For further details contact, Tel. 0 7727 0905 or www.dnp.go.th



Khao Na Nai Luang National Park

Phanom, Surat Thani



Khao Na Nai Luang National Park

Phanom, Surat Thani



Located at Mu 8, Ton Yuan Subdistrict, this shaded, peaceful community surrounded by nature is perfect for those looking for a calming meditation retreat. The most important and sacred site contained in the community is Phra Phutta Silawadi, an elevated pagoda built on a 300 metres high limestone peak from laterite imported from Kamphaeng Phet province. The inside of the pagoda houses sacred remains of the Buddha and there is also an ancient 'Kao Yot' styled gateway known as 'Phutthawadi' which makes for excellent photographs during the early hours when the sun's rays burst through the opening.



Ban Nam Rat Watershed Forest

Khiri Rat Nikhom, Surat Thani



Ban Nam Rat Watershed Forest

Khiri Rat Nikhom, Surat Thani



Located in Ban Thamniap Subdistrict, this turquoise hued spring boasts beautifully clear waters which are shallow enough to bathe in.

Aside from this, there are boats and rubber rings available to rent but it is imperative that all visitors strictly adhere to the regulations of the area in order to help maintain this area of stunning natural beauty. This includes not bringing food and beverages or soap and shampoo into the area and refraining from using plastic bags or other plastic goods.



Open daily 08.00-17.00 hrs.

Entrance fee: 10 baht donation is required to enter and all proceeds go to the upkeep of the area. Car parking is available at 20 baht per vehicle.



Hin Phad

Khiri Rat Nikhom, Surat Thani



Hin Phad

Khiri Rat Nikhom, Surat Thani

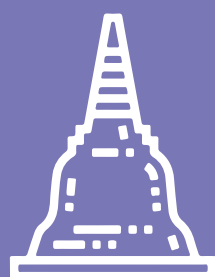


Located at Ban Yuan Sao, Tha Khanon Subdistrict. It is a large boulder resembling stacked fan with visible gaps between their bases. It stands approximately 5-6 metres tall with a base width of about 30 centimetres. It is believed to have formed for thousands of years. Local people believe that If you touch a rock with your hand and toss a coin into the base, which has a gaping hole on the other side. The prayer will be successful.

Hin Phad area has a wide-open space for tourists to see the scenery of Khiri Rat Nikhom District and Ban Ta Khun District. Visitor can enjoy captivating sunrises and sunsets, while a dedicated camping ground caters to those who wish to camp and stargaze during the night or witness the enchanting sea of mist in the morning



For further details contact, Khiri Rat Tourism Association, Hin Phad Yuan Sao Waterfall, Khun Riam Saengchan, Khun Chakrapong Wichien, Tel. 09 2463 2129, 09 8013 2129, 08 2805 0828



Wat Phra Borommathat Chaiya Ratcha Worawihan

Chaiya, Surat Thani



Wat Phra Borommathat Chaiya Ratcha Worawihan

Chaiya, Surat Thani



This ancient pagoda is designed in the Mahayana Buddhist style and was constructed way back in the days when the Si Wichai empire was at its most prosperous. It is the only remaining site in the whole of Thailand with examples of art and architecture from this particular era and the temple also houses important 'Sarira' Buddhist relics

An image of the temple is commonly used as a symbol of Surat Thani province for official purposes and no visit to the province should be complete without paying your respects here.

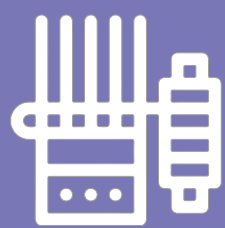


The temple grounds are also home to the Chaiya National Museum, which hosts some fabulous exhibitions related to the art and history of Chaiya Province.

Open Wednesday-Sunday 09.00-16.00 hrs.
(Closed on Monday & Tuesday and public holidays).

Entrance fee: 100 baht

For further details contact, Tel. 0 7743 1066



Ban Phum Riang Ecotourism Community

Chaiya, Surat Thani



Ban Phum Riang Ecotourism Community

Chaiya, Surat Thani



Located in Phum Riang Subdistrict, this small community includes both Buddhist and Muslim members living and working harmoniously alongside each other. Most of the villagers make a living from fishing and they have recently created a crab bank and fish farm. There's also Ko Set, 30 minutes from the Laem Pho coast, which acts as a marine life nursery and is vital for the community's livelihood. Visitors who want to check out the island can reserve a boat trip in the community and join in with collecting the clams during low tide.

Phum Riang Silk is undoubtedly the community's most famous product and comes in various hues of silver and blue with a number of unique floral patterns. Visitors can watch the silk being woven and buy silk products at the Phum Riang market.



For further details contact, Tel. 09 2379 3969, 09 9319 9570



Wat Tham Khuha

Kanchanadit, Surat Thani



Wat Tham Khuha

Kanchanadit, Surat Thani

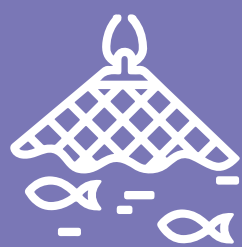


Located in the northern part of Khuha mountain. It is a small limestone hill. There are cave holes caused by the erosion of groundwater and rain water that flows along the cave. There is an entrance to the cave facing east. It is a large cave with a passage to go inside continuously with the crater above. The main hall of Tham Khu Ha is about 17 metres long and 8 metres wide, and houses a Buddha image. which includes a stucco Buddha image sand stone buddha and raw clay Buddha images, there are about 50 with the principal Buddha image being a gilded stucco Buddha image in the reclining posture. It is about 8 metres long and is enshrined at the end of the inner wall on the opposite side of the entrance to the cave.

There are also clay sculptures on the walls and ceiling of the cave. tells a story based on the Lotus Sutra in Mahayana Buddhism Someone told me that originally these clay images filled the ceiling of the cave. But has fallen into a large number. At present, there are only two places of clay sculptures left: on the wall and on the ceiling at the entrance to the cave. and the corner of the ceiling on the southeast side The Fine Arts Department announced the registration as a historical site on 3 January 1937.



For further details contact, Ms. Nantaphon Mora
(Village's leader) Tel. 08 3393 7222



Lilet Conservation Tourism Community

Phunphin, Surat Thani



Lilet Conservation Tourism Community

Phunphin, Surat Thani

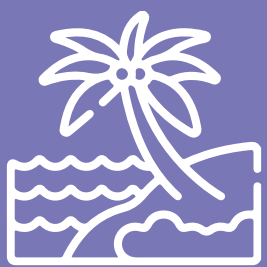


Located at Mu 5, Lilet Subdistrict, this community lies among a lowland delta plateau where numerous rivers, streams and waterways meet and mingle. Sections of the community lie right on the coast, while further inland are mangrove forests with thriving, abundant ecosystems. The main occupations of the villagers here are fishing, planting and harvesting coconuts and shrimp farming.

At present there are many activities on offer for visitors and tourists can often see colonies of fireflies in the trees during the dusk hours. There's also the chance to peruse and purchase locally produced goods like woven baskets, sweets, shrimp paste. The community includes homestay accommodation and excursions are available for those interested.



For further details contact, Tel. 0 7749 1082, 08 7889 0034



Ko Samui

Ko Samui, Surat Thani



Ko Samui

Ko Samui, Surat Thani



Lying around 84km to the west of the Surat Thani coastline, this 247 square kilometres island is mainly flat with mountain ranges towards its flanks, making it perfect for visits all year round. Between February and September is favorable though, as there is no chance of monsoon rains.

Due to the fact that Samui boasts some incredible natural attractions both on land and at sea, as well as stunning beaches and a host of accommodation, dining options and entertainment venues and its own airport, it has become incredibly popular with foreign visitors to Thailand.

The most popular sites on the island are:

Chaweng Beach – This white sand beach features an impressive range of accommodation and the beach front road is home to vibrant nightlife venues and retail outlets.

Lamai Beach – Similar to Chaweng, although noticeably quieter and less developed.

Hin Ta Hin Yai (Grandfather and Grandmother Rocks) Located close to Lamai Bay, these large, oddly shaped granite stones are a result of many years of erosion. There are souvenir and gift shops located close to the viewing point with the famous 'Kalamae' toffees from Ko Samui on sale.

Bophut Beach is renowned for its vibrant Bophut Walking Street community. This area is suitable for leisurely walks, shopping, purchasing souvenirs. Visitors can explore the various shops and boutiques offering unique items. Additionally, there are numerous restaurants that cater to different lifestyles, providing an opportunity to indulge in delicious meals and enjoy the ambiance.

Big Buddha or Lord Buddha It is a Buddha image in subduing Mara. The width of the lap is 11.8 metres and is enshrined at Ko Fan. Nowadays there are many souvenir shops. In order to go up to the audience, the dress must be done because it is a religious place.

There are many more beaches besides the most famous ones, including Mae Nam Beach, Bo Beach, Choeng Mon Beach, Bang Po Beach, Na Ton Beach, Taling Ngam Beach and Phang Ka Bay.



The following companies operate passenger ferries from Surat Thani – Ko Samui

Seatran Ferry Ltd. – From Don Sak pier
Tel. 1381 or www.seatranferry.com

Raja Ferry Ltd. – From Don Sak pier
Tel. 0 7737 2800-2 or www.rajaferryport.com

Songserm Rungruang Ltd. – From Laem Tuad pier
Tel. 0 7737 1554

Lomphraya Speedboat Ltd. – From Phraya Tapi pier
Tel. 0 2629 2569-70, 0 7720 0932-3 or www.lomprayah.com

There is also a sleeper ferry which leaves from Ban Don pier
Tel. 0 7723 4200, 08 2776 1243, 09 5256 0939



Muko Ang Thong Marine National Park

Ko Samui, Surat Thani



Muko Ang Thong Marine National Park

Ko Samui, Surat Thani



This idyllic archipelago is approximately 20 km from Ko Samui and consists of around 40 small islands. Tourists can sign up for one day boat trips which embark from Ko Samui or Ko Pha-ngan with any of the local travel agents.

The highlight of the archipelago is Ko Wua Ta Lab, which acts as a center and features pristine beaches as well as a 400 metre trail which leads of to the summit of the hill in the island's centre. Once at the top, visitors can enjoy expansive views over the archipelago and further out into the Gulf of Thailand.

There is also a natural lagoon with a pathway of natural steps leading up to a vantage point which allows visitors to look down over the emerald waters surrounded by rocky cliffs and greenery.

There are also numerous islands which are suited to snorkeling and scuba diving including Ko Sam Sao, Ko Thai Phlo, Ko Wua Kan Tang and Ko Hin Dab, which is also home to the longest stretches of sand in the entire archipelago.



Entrance fee: Adults 300 baht/Children 150 baht
There is accommodation in the park as well as a camp site for those with tents.

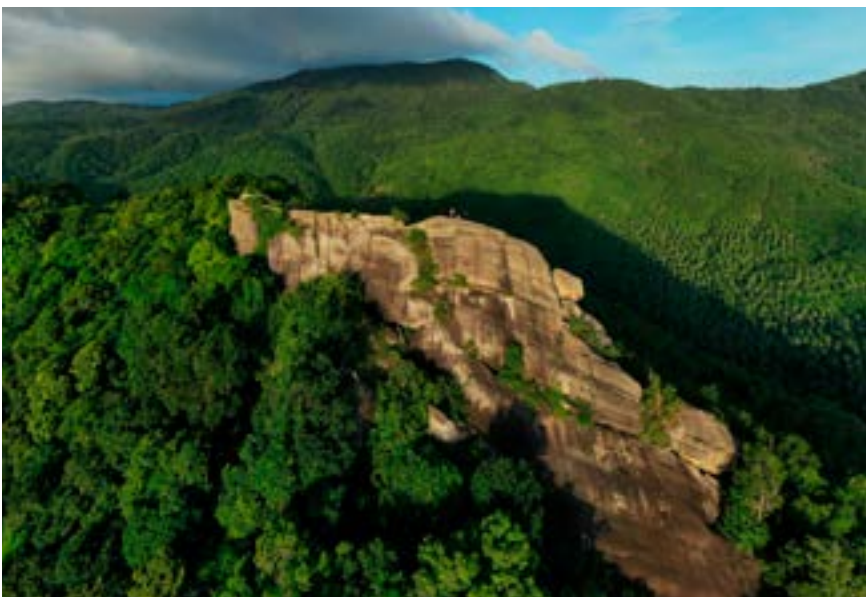
For further details contact, Muko Ang Thong Marine National Park, Tel. 0 7728 0222, 06 4642 5186 or at www.dnp.go.th





Ko Pha-ngan

Ko Pha-ngan, Surat Thani



Ko Pha-ngan

Ko Pha-ngan, Surat Thani



Ko Pha-ngan has an area of 168 square kilometres. The mountain landscape resembles a starfish shape. The mountains stretch from the middle of the island and reach the sea at various intervals. The seaside atmosphere of Ko Pha-ngan is shady, peaceful, with fine white sandy beaches. The ideal time to visit is from February to September, as these months experience minimal monsoon activity, ensuring a pleasant sea condition for travelers.

Attractions on Ko Pha-ngan include:

Thong Sala Bay is the location of the passenger pier for trips to Surat Thani, Ko Samui, Ko Tao and is the largest community of Ko Pha-ngan District. It is a centre of transportation, banks, shopping centres, restaurants, shops, centre agencies. and accommodation

Chaloklum Bay is located in the north of the island. It is a parking spot for fishing boats. It has the largest fishing community on the island. There are many seafood restaurants available. At the end of Chaloklum Bay, there is a white sandy beach that is still natural and peaceful. good place to relax And is a community that produces souvenirs that are famous for Ko Pha-ngan. is dried squid

Rin Beach is located at Mu 4, Ban Tai Subdistrict. It is considered one of the most beautiful beaches on Ko Pha-ngan. The white sand beach is fine like powder. It is approximately 900 metres in length. Foreign tourists are popular with the “Full Moon Party” activities and with the management of the community. Haad Rin Entrepreneur Club, this makes Rin Beach one of the most beautiful, clean and safest beaches on Ko Pha-ngan. In addition, there is a view point for beautiful scenery. Overlooking the bay curves of Rin Nai Beach and Rin Nok Beach.

Thale Waek Ko Ma and Mae Hat Beach are in the northwestern part of the island. It is a separate sea that extends all the way to Ko Ma. This is another beautiful beach on Ko Pha-ngan. Ko Ma is the most beautiful snorkeling area of Ko Pha-ngan.

Ko Raham and Son Beach “*Ko Raham*” is the name of the restaurant and bar by the sea. Located at the end of the headland protruding into the sea of Son Beach. North West of Ko Pha-ngan Most of the shop’s structure is made of wood. The design is decorated with natural materials. Provides a comfortable atmosphere suitable for relaxation There is a cement staircase to walk down to touch the sea. In the evening, there will be tourists who come to use the service and wait to watch the sunset. It is one of the most romantic places on Ko Pha-ngan.



Malibu Beach is located in a fishing village area north of Chaloklum Bay. North of Ko Pha-ngan good atmosphere beach There are fine grains of white sand. The identity of the beach that tourists often come to take a souvenir photo is the pine trees shaped like mushrooms that line the beach. The greenery of mushroom-shaped trees and palm trees. Contrast with the smooth white sand on the beach and the blue sea. It is a beautiful atmosphere of this beach.

Zen Beach is located in the west of Ko Pha-ngan. The beach is about 500 metres long, the sand is soft and fine. It is a beach where nature lovers and waders like to come together to socialize, relax or play beach sports. Here is another beautiful sunset viewpoint of Ko Pha-ngan.

Than Sadet Waterfall Located in Ban Tai Subdistrict, King Rama V visited no less than 14 times and bestowed the name "Than Sadet" on it.

In addition, there are other beaches which are beautiful and interesting, such as Thong Nai Pan Bay, Long Beach, Raham Island, etc.



Passenger boats Surat Thani - Ko Pha-ngan include

- Seatran Ferry Co., Ltd. departs from Don Sak Pier, Call 1381 or www.seatranferry.com
- Raja Ferry Co., Ltd. departs from Don Sak Pier Tel. 0 7737 2800-2 Ko Pha-ngan Office Tel. 0 7737 7452-3 or www.rajaferryport.com
- Lomprayah High Speed Ferries Company Limited departs from Don Sak Pier. (Laem Tuad Pier)
- Thong Sala Pier (Ko Pha-ngan) Tel. 06 5350 9040-2 or www.lomprayah.com
- Sleeper boat Sup Thawee leaves from Ban Don Pier. (Surat Thani) - Thong Sala Pier (Ko Pha-ngan) Departure time 23.00-06.00 Departure from Ko Pha-ngan 22.00-10.00 For more information, Tel. 06 3519 9428

Passenger boat Ko Samui - Ko Pha-ngan, including

- Lomprayah High Speed Ferries Co., Ltd. Tel. 06 5350 9040-2 or www.lomprayah.com
- Raja Ferry Co., Ltd. departs from Lipa Noi Pier. Ko Samui - Thong Sala Pier, Ko Pha-ngan Tel. 0 7737 7452-3 or www.rajaferryport.com





Ko Tao

Ko Pha-ngan, Surat Thani



Ko Tao

Ko Pha-ngan, Surat Thani



This large island in the Ko Pha-ngan district, is about 45 km from Pha-ngan island, covers an area of around 25 square km and features some incredible beaches with crystal clear water and vast areas of coral reef on all sides, both in deep and shallower seas.

Tourists from all over the world flock to Ko Tao to learn the art of scuba diving and there are numerous schools on the island that offer courses. The best time to visit is between the end of December and September and there is a wide range of accommodation for tourists.

Aside from the diving, the island features the following attractions :

Mae Hat Bay is the island's most populated community and the location of the main pier. Visitors here can find a vast selection of restaurants, shops and tour companies.

Sairi Beach is not far from the pier and is the island's longest beach, featuring powdery white sand and a great selection of resorts, hotels and beach huts.

John-Suwan Viewpoint is located on Khao Chaloke hill and gives the best views down over the island.

There are many more fine beaches to explore such as Laem Hin, Laem Thian Bay, Tanote Bay, Luek Bay, Sai Daeng Beach, Laem Ta To, Chaloke Bay, Ban Kao and more.



To reach Ko Tao it is recommended to take a boat to Ko Samui for convenience. The companies offering boat services between Ko Samui and Ko Tao are as follows.

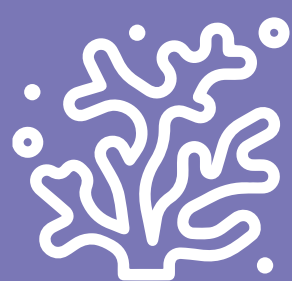
Lomprayah Speedboat Ltd.

Tel. 0 2629 2569-70, 0 7795 0700-1, 06 5350 9040-2
or www.lomprayah.com

Seatran Discovery Ltd.

Tel. 0 7795 4171-5, 0 7795 0559, 08 6476 4825
or www.seatrandiscovery.com





Ko Nang Yuan

Ko Pha-ngan, Surat Thani



Ko Nang Yuan

Ko Pha-ngan, Surat Thani



Ko Nang Yuan, located about 500 metres to the north west of Ko Tao in the Ko Pha-ngan District, is made of three small islands connected by a strip of sand which is only revealed at low tide. The sand is fine, the water clear and there's plenty of coral reef for divers to explore.

There is also a viewing point on the crest of the hill at the center of the island which gives a breathtaking view of the connecting beach below.



To get there, hire a longtail boat from Mae Hat or Sairi Beach, Ko Tao. The trip across takes around 20 minutes.



TAT CONTACT CENTER

TOURISM AUTHORITY OF THAILAND (HEADQUARTERS)

1600 Phetchaburi Road, Makkasan,
Ratchathewi, Bangkok 10400

Tel. 0 2550 5500 Fax 0 2253 7440

www.tourismthailand.org

email : info@tat.or.th

Open everyday 08.30 – 16.30 hrs



Suvarnabhumi Airport

Domestic Terminal, 2nd Floor, Gate 3

Tel. 0 2134 0040

Open 24 hours

Don Mueang Airport

International Terminal (Building 1), 1st Floor, Gate 2

Tel. 0 2504 4301

Open 24 hours

TAT, Surat Thani Office

5 Talat Mai Road, Talat Subdistrict,
Mueang Surat Thani, Surat Thani 84000

Tel. 0 7728 8817-9 Fax 0 7728 2828

email : tatsurat@tat.or.th

Responsible for tourism in Surat Thani province only



TAT, Ko Samui Office

370 Mu 3, Ang Thong Subdistrict, Ko Samui, Surat Thani 84140

Tel. 0 7742 0504, 0 7742 0720-2 Fax 0 7742 0721

email : tatsamui@tat.or.th

Responsible for tourism in Ko Samui, Ko Tao, and Ko Pha-ngan only.



amazing
THAILAND